

ADDENDUM #2

November 8th, 2021

NOTICE TO ALL PLAN HOLDERS:

Please make note of the following clarifications and revision to the bid documents:

Revision

1. Revisions to Sheet 14 - Electrical Building Details and Layout:

- a) The 10 KVA Transformer and 120/240V 1-phase panel will be removed from the Project, 1-phase circuits will be supplied from the 3-Phase panel using single pole breakers.
- b) Each 240V, 3-Phase main panel shall be rated for 100 amps.
- c) Added Bussmann brand fuse block for LP-CC Time Delay Fuses to:
 - i. Siemens Hydro Ranger 200 Controller
 - ii. Alarm System

See attached revised Sheet 14 for modifications to the electrical equipment.

2. Revisions to Sheet 12 – Hayes Lift Station Details

- a) Submersible pump discharge elbow is changed from a 4" to a 3" elbow, also requiring a 3"x4" flanged reducer.

See attached revised Sheet 12 for modifications to the pump discharge elbow.

3. Revision to Special Provision 2: Lift Station Pumps – Submersible Pumps

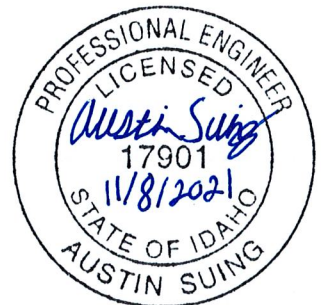
- a) Changes to Special Provision 2 - Section 2.2 should read as follows:

2.2 HAYES LIFT STATION SUBMERSIBEL PUMP

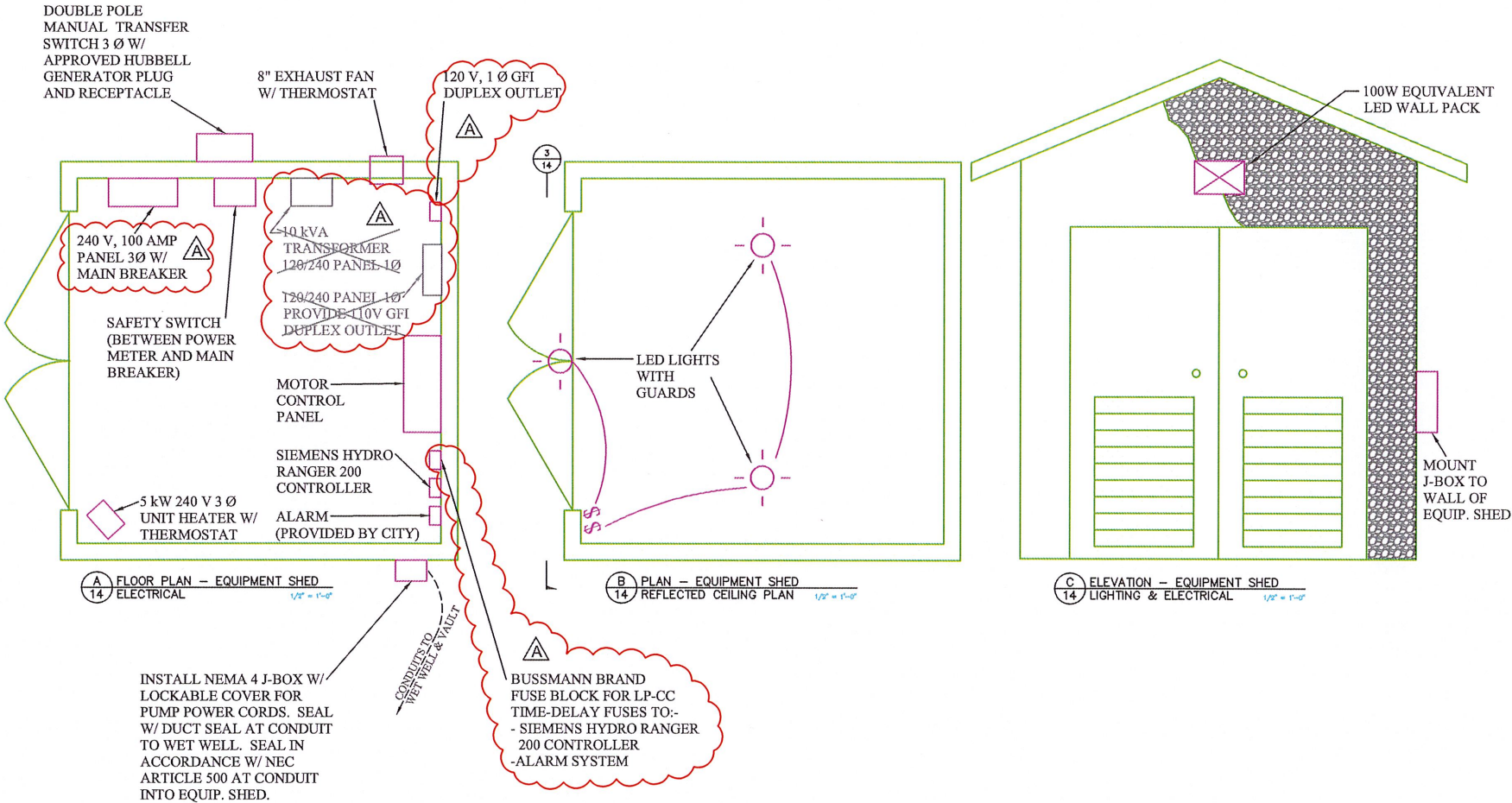
- A. The Hayes Lift Station shall be installed with (2) Flygt submersible pumps, Model NP 3085 MT 3 with 3" discharge.
 1. Required Duty Point: 221 gpm at a total dynamic head of 25.1 feet.
- B. Each pump shall be equipped with a 3 HP submersible electric motor, capable to operate on a 240 volt, 3 phases, 60 hertz voltage supply

PLEASE REMEMBER TO ACKNOWLEDGE RECEIPT OF THIS ADDENDUM ON THE BID FORM.

END OF ADDENDUM 2



NOTES:
1. SEAL OFF INTERIOR OF ALL CONDUITS BETWEEN SHED & WET WELL OR VAULT IN ACCORDANCE WITH NEC ARTICLE 500. PLACE SEALANT AT EQUIP. SHED.
2. ELECTRICIAN MAY RELOCATE ELECTRICAL EQUIPMENT AS REQUIRED W/ ENGR'S PRIOR APPROVAL.



REVISION NOTES:

- REMOVE TRANSFORMER AND 1 Ø PANEL, 1 Ø CIRCUITS FROM 3 Ø MAIN PANEL USING SINGLE POLE BREAKERS.
- FUSE BLOCK INSTALLED FOR CONTROLS EQUIPMENT ON 1 Ø CIRCUITS.

REVISIONS:	DATE:
A ELECTRICAL MODIFICATIONS	11 / 05 / 2021
B	
C	



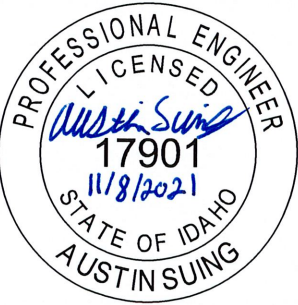
OFFICE OF THE ENGINEERING DEPARTMENT
911 N 7TH AVE ♦ POCATELLO, ID. 83201 ♦ 208.234.6225

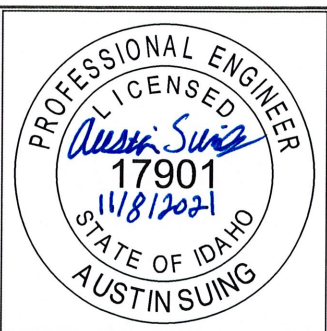
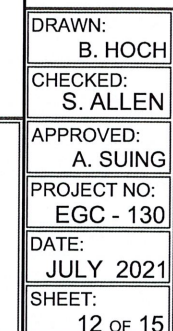
CONSTRUCTION PLANS

WHITMAN & HAYES
LIFT STATIONS PROJECT

ELECTRICAL BUILDING DETAILS & LAYOUT

DRAWN:
B. HOCH
CHECKED:
J. MURPHY
APPROVED:
A. SUING
PROJECT NO:
EGC - 130
DATE:
JULY 2021
SHEET:
14 OF 15





REVISIONS:	DATE:
A PUMP DISCHARGE MODIFICATIONS	11 / 08 / 2021
B	
C	



HAYES LIFT STATION DETAILS